

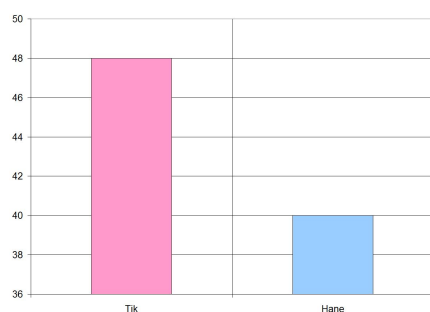


# Results of the **Physical Characteristic Survey** for barbets in Sweden

- open for dogs 2 years or older -  
The summary was made in 2016

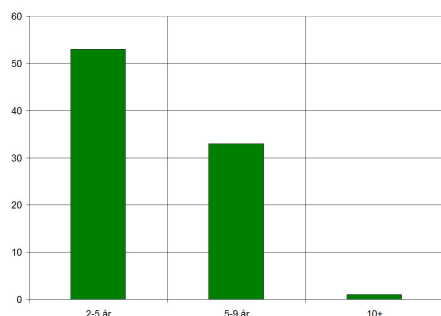
There are approximately 220 barbets over 2 years at this time, and approximately 40% have responded to the Physical Characteristic Survey.

---



## Female or Male

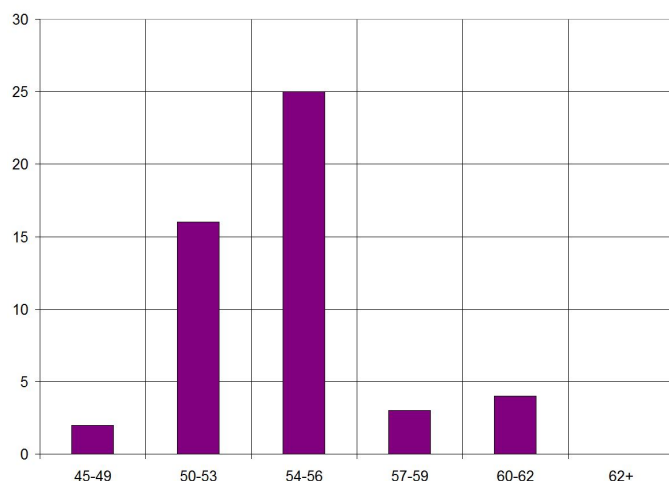
- A few more females than males are represented in the survey.



## Age of the Dog

- It's only a small proportion of older dogs represented in the survey.

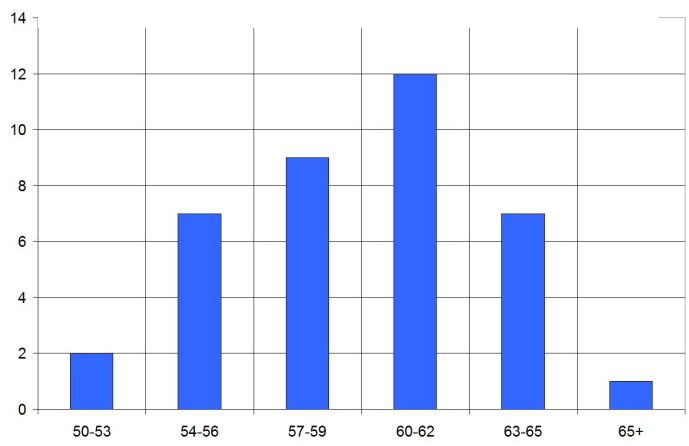
1a.



## Female - Height of withers

Centimeters

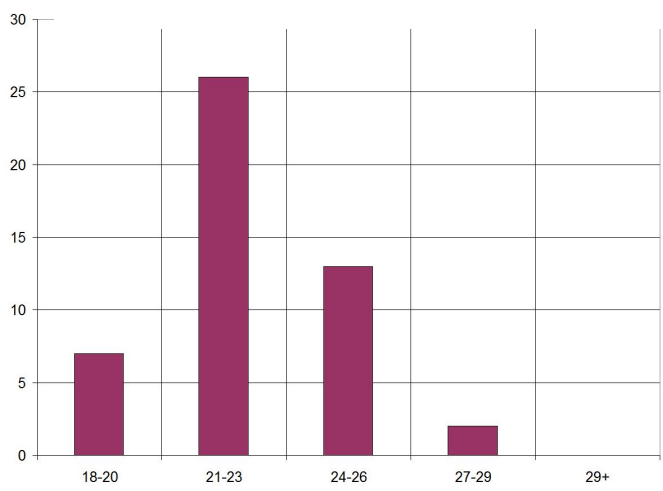
1b.



Male - Height of withers

*Centimeters*

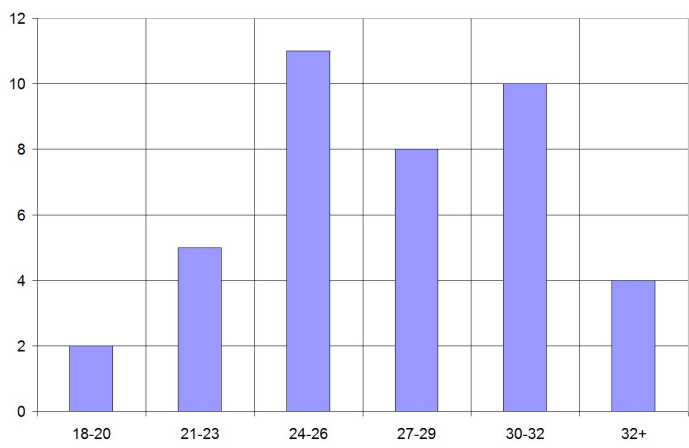
2a.



Female Weight

*Kilogram*

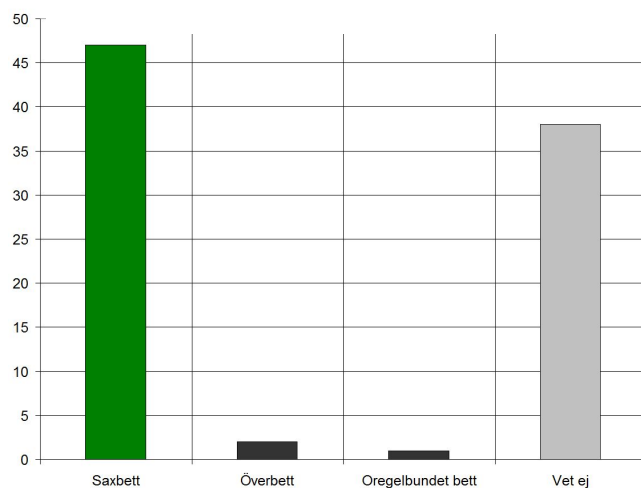
2b.



Male Weight

*Kilogram*

3.



## Teeth and Bite

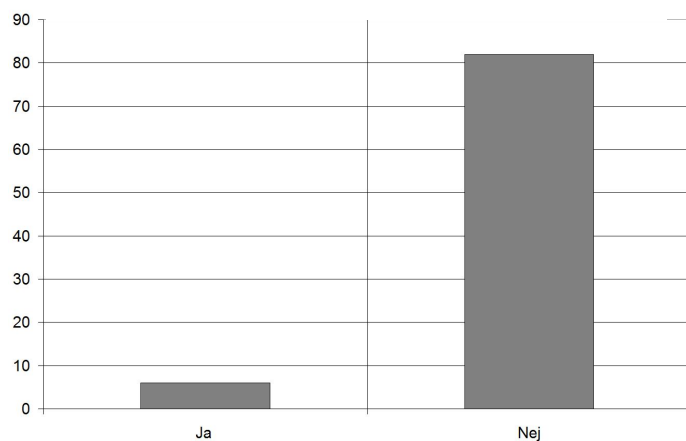
*Scissorbite*

*Overshot*

*Irregular*

*Do not know*

4a.

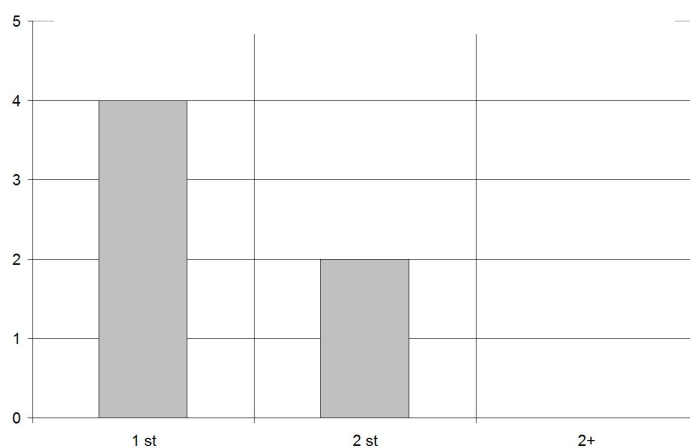


## Does your dog lack any teeth?

*Yes = in total 6 dogs*

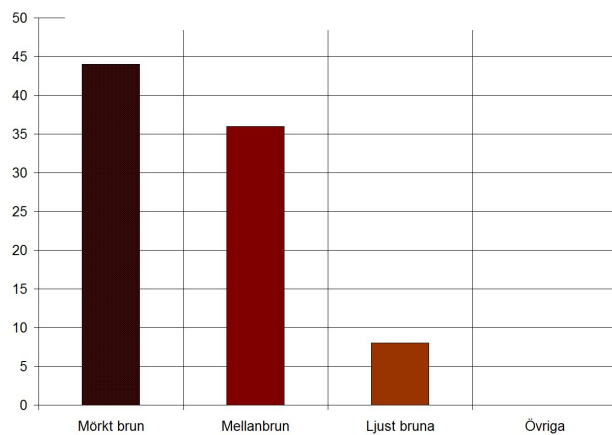
*The question refers to congenital missing teeth. Not teeth knocked out or removed.*

4b.



## How many teeth are missing?

5.



### Eye-color

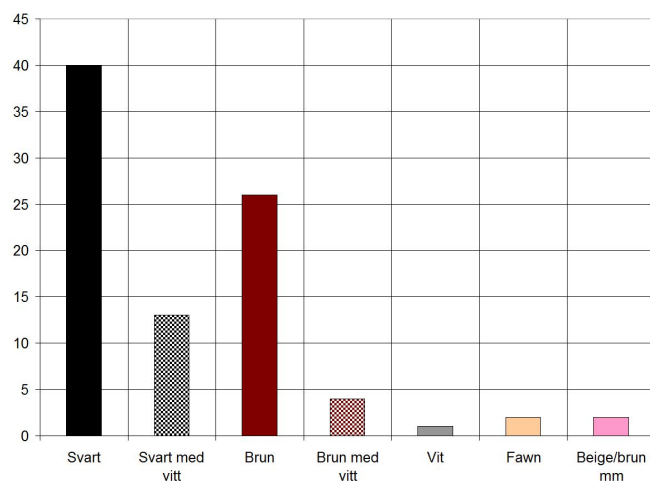
*Dark brown*

*Medium brown*

*Light brown*

*Other*

6a.



### Coat - color

*Black*

*Black with white*

*Brown*

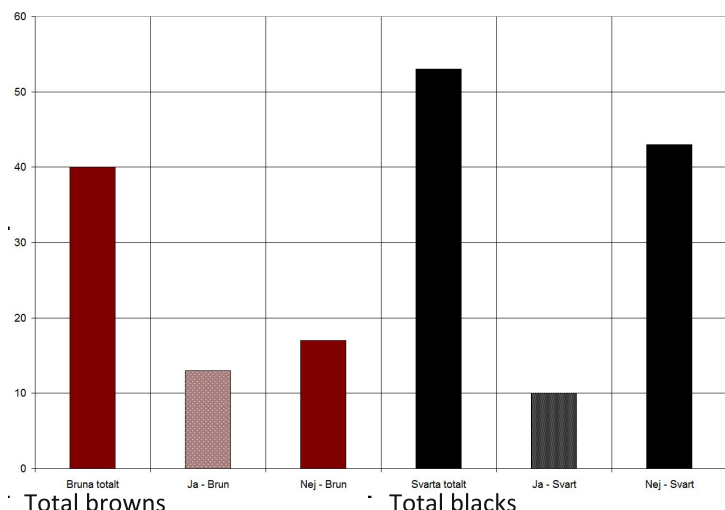
*Brown with white*

*White*

*Fawn*

*Beige/vagely brown, etc*

6b.



**Has the color faded significantly over time?**

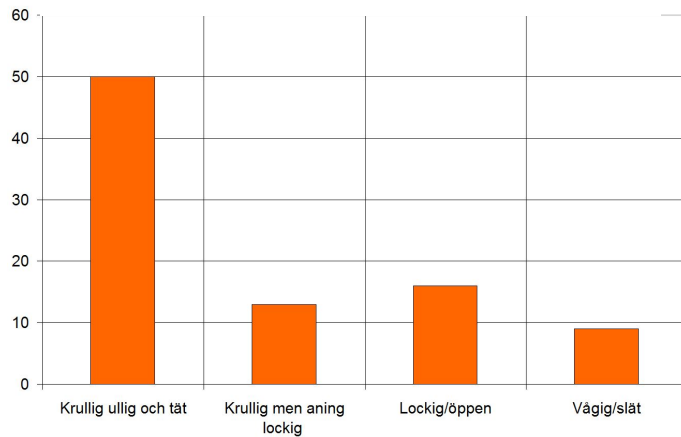
Total browns

YES - brown / NO - brown

Total blacks

YES - black / NO - black

7a.



**Which type of coat would you say that your dog have?**

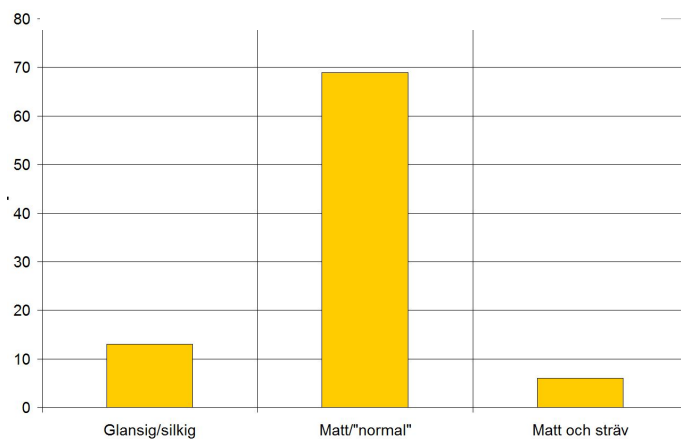
*Curly, Woolly and of a Dense Nature*

*Curly but Slightly more of an Open Curly Character*

*Curly (Open Curls) and Wavy*

*Wavy, with the Hint of a Flat Character*

7b.



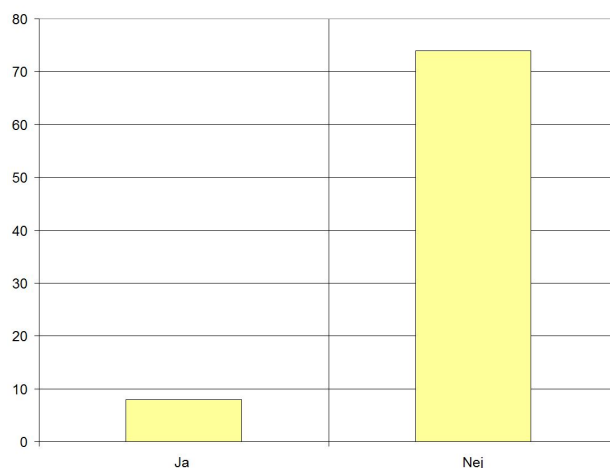
**What 'feel' has your dogs Coat?**

*Glossy and Silky*

*Matt and Normal (not Silky or Rough)*

*Matt and Rough*

8.



**Any external physical abnormality that is not deemed typical of the breed?**

*Note. The assessment should have been made, for example, by a Show Judge, a Breeder or by someone knowledgeable of the Breed?*